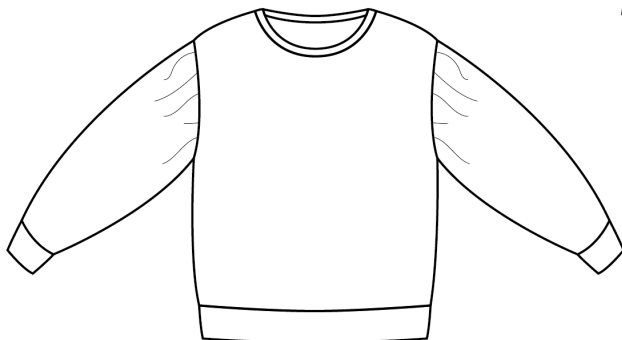
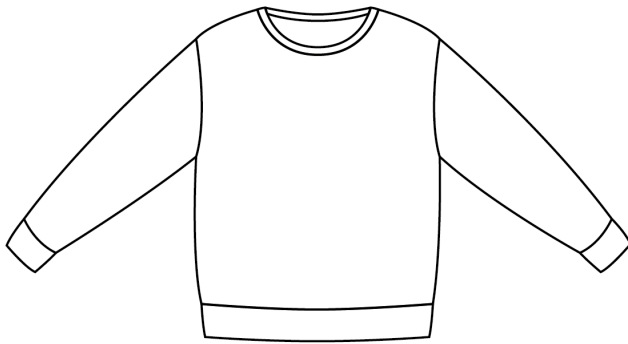




Sizes
92 - 164



Questions or problems?
Feel free to contact me:
Facebook: www.facebook.com/beletoileblog
Email: info@beletoile.com
Instagram: @_beletoile_

Thanks for downloading Vesper
I would like to point out that all content of this pattern is copyright protected.
It is therefore not allowed to share the PDF file or printed copies of the pattern with others.
This pattern is only intended for personal use.
Any reproduction or resale of this pattern is forbidden by law.
It is allowed to make copies for personal use.

The pattern *may be used to sell finished items in small quantities*, after written permission by the designer and by indicating the name of the pattern and the link to the websites.

Would you like to give a *workshop* with the pattern?

Contact me for the conditions.

Happy sewing!
Isabel



Printing instructions

You can print the pattern on A4 or letter sized paper at home.

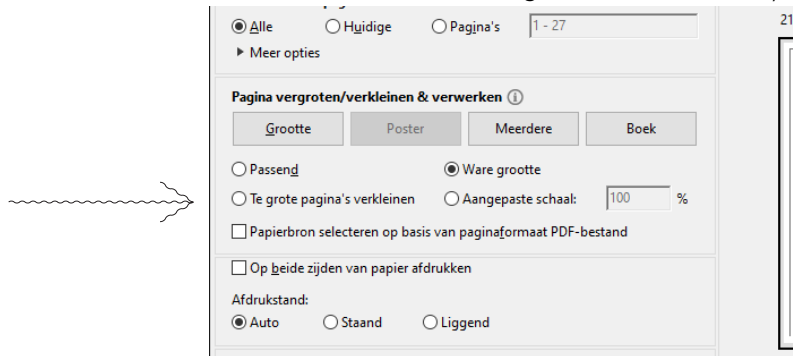
First download the pattern and open it again on PC / laptop /smartphone.

Make sure to set the printing to "real size or 100%".

In the printer settings, select "automatic portrait/lying down".

A test square is available on the first page of the pattern, make sure to measure it.

To save our environment, we recommend viewing the instructions on your tablet or computer.

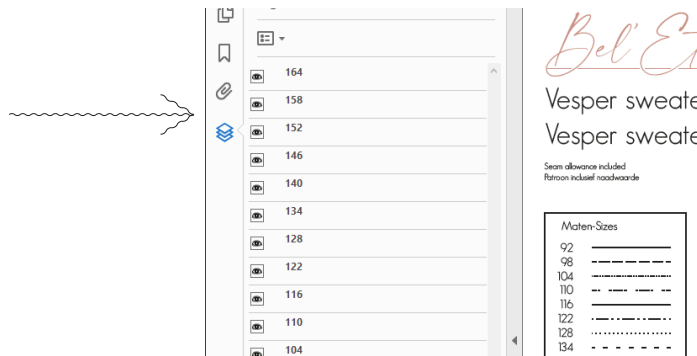


You can choose to only print the size you need.

Open the pattern in Adobe Acrobat PDF reader and click on the "layers" icon.

Tick off all layers that you don't need, except the bottom layer, which contains all required text and marks.

To save paper, you can check the table on page 5 to see which pages you need to print for each version of the pattern.



Projector file

A projector file is included in the pattern.

Layers:

- patternpieces/size
- calibration layer
- grid layer 10 x 10cm

We include thick solid lines for extra visibility, large font, lots of space around the pattern pieces, mirrored pieces (when necessary) and full pattern pieces with indicated foldline.

About Vesper:

Vesper is a pattern for sewing a cool oversized sweater or dress.

Go for statement gathered sleeves or keep it more simple with the regular sleeves.

The dress has a full gathered skirt for some serious twirling action ;-)

These instructions offer you step-by-step drawings and directions to allow every seamstress, from beginner to more experienced.

Useful charts

Size chart

THE NUMBERS TELL THE TALE!

Measure carefully before determining which size to make.

There can be differences between ready to wear sizes and sewing pattern sizes.

The chest circumference is the determining size, use that measurement as a starting point.

Between 2 sizes? Choose the smaller one, the sweater/dress is wide enough.

Size	92	98	104	110	116	122	128	134	140	146	152	158	164
Height	92	98	104	110	116	122	128	134	140	146	152	158	164
Chest	53	55	57	59	61	63	66	69	72	75	78	81	84
Waist	51	53	54	56	58	60	62	63	64	66	67	69	70

Measurements finished pieces

This table offers an overview of how much ease is added to each size and the length of each garment.
(measured from back neck to hem)

You can compare these measurements to a well fitting garment and make adaptations if necessary.

Size	92	98	104	110	116	122	128	134	140	146	152	158	164
Chest circumference dress/ sweater	73	75	77	79	81	83	86	89	92	95	98	101	104
Length sweater	36,5	38,5	40	42	44	46	48	50	52	54	56	58,5	60,5
Length dress	50	53	56,5	60	63	67	70	73	76	80	84	88	92

Recommended fabrics

Vesper was drafted for knit fabric so you have lots of option.
A few examples are french terry, waffled knit, regular knit, knitted fabrics, etc.

Fabric & notion requirements

Fabric width: 140cm

Size		92	98	104	110	116	122	128	134	140	146	152	158	164
Fabric for sweater	Regular sleeve	70	70	70	80	80	90	90	90	100	100	110	110	115
	Gathered sleeve	70	70	80	80	85	90	90	95	100	100	110	110	115
Fabric for dress	Regular sleeve	90	90	110	110	120	130	140	140	150	150	150	210	210
	Gathered sleeve	90	100	110	110	120	130	150	140	180	190	200	210	210
Ribbing for sweater		35	35	35	35	35	35	35	35	35	35	35	35	35
Ribbing for dress		20	20	20	20	20	20	20	20	20	20	20	20	20

Seam allowance

Seam and hem allowance are included in all pattern pieces.

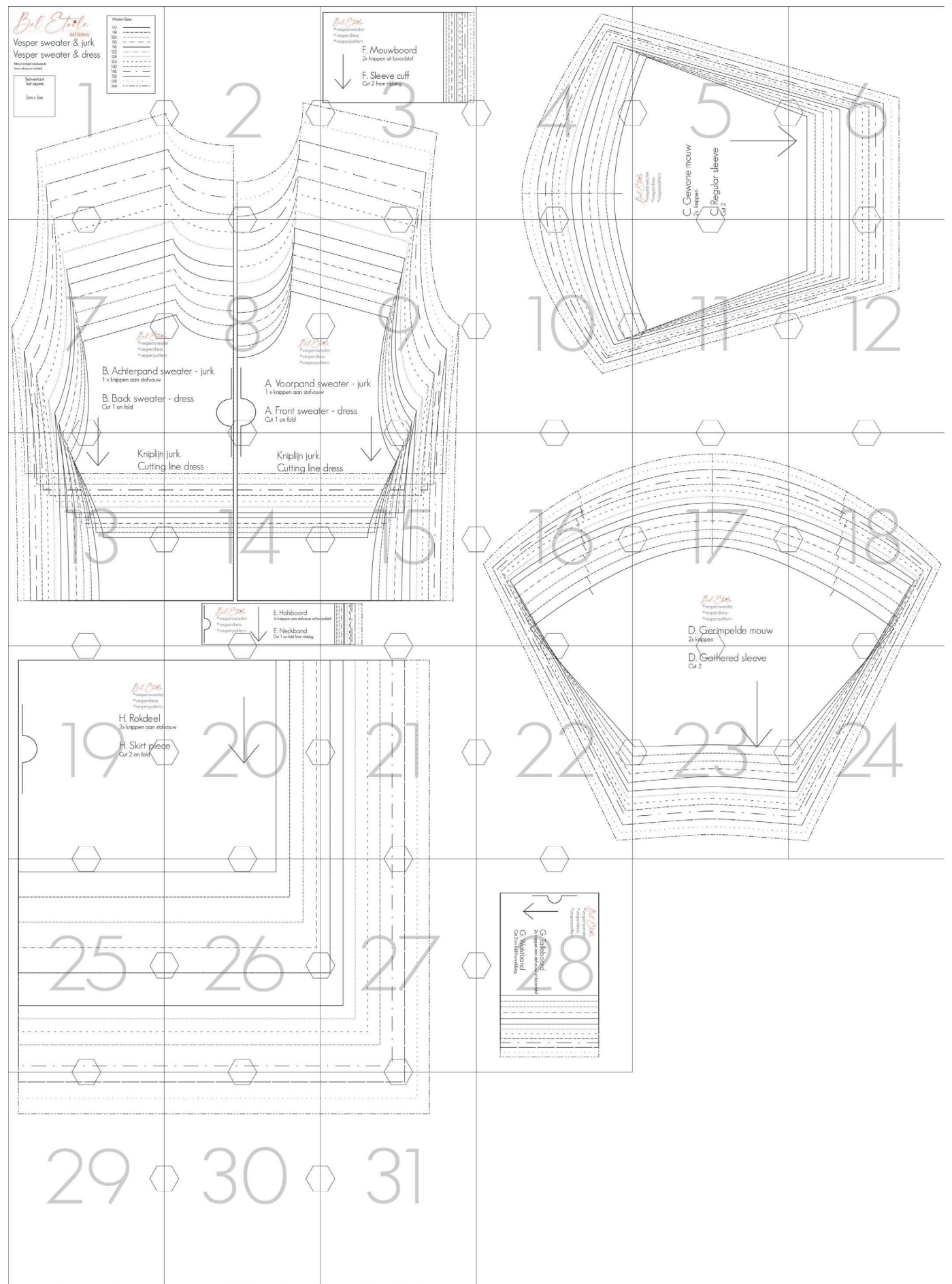
They are 0cm at the fold and 1 cm around.

For the hem of the dress we added 2cm.

Pages to print - all sizes

Size	92	98	104	110	116	122	128	134	140	146	152	158	164
Front and back sweater/ dress + neckband + sleeve cuff	3, 7-9, 13-15	3, 7-9, 13-15	3, 7-9, 13-15	3, 7-9, 13-15	3, 7-9, 13-15	3, 7-9, 13-15	2-3, 7-9, 13-15	1-3 7-9, 13-15	1-3 7-9, 13-15	1-3 7-9, 13-15	1-3 7-9, 13-15	1-3 7-9, 13-15	1-3 7-9, 13-15
Skirt pieces dress	19- 20, 25-26	19- 20, 25-26	19- 20, 25-26	19- 20, 25-26	19-21, 25-27	19-21, 25-27	19-21, 25-27	19-21, 25-27	19-21, 25-27	19-21, 25-27	19-21, 25- 27, 29-31	19-21, 25- 27, 29-31	19-21, 25- 27, 29-31
Regular sleeve	4-6, 10-12	4-6, 10-12	4-6, 10-12	4-6, 10-12	4-6, 10-12	4-6, 10-12	4-6, 10-12	4-6, 10-12	4-6, 10-12	4-6, 10-12	4-6, 10-12	4-6, 10-12	4-6, 10-12
Gathered sleeve	16-18, 22-24	16-18, 22-24	16-18, 22-24	16-18, 22-24	16-18, 22-24	16-18, 22-24	16-18, 22-24	16-18, 22-24	16-18, 22-24	16-18, 22-24	16-18, 22-24	16-18, 22-24	16-18, 22-24
Waistband sweater	28	28	28	28	28	28	28	28	28	28	28	28	28

How to tape pages together



Possible pattern adaptations

Shortening or lengthening

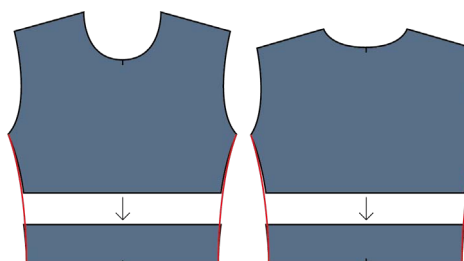
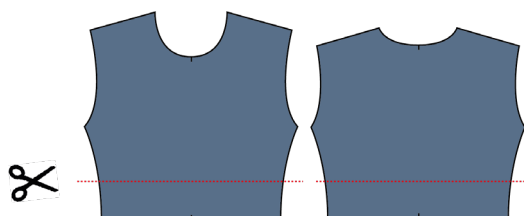
Do you have to make a size 92 according to the chest circumference, but you need the length of a size 104?

This is how you can lengthen your pattern pieces.

Front and back pieces sweater/dress

Cut your pattern pieces as shown.

Slide both pieces away from each other to lengthen and over each other to shorten.

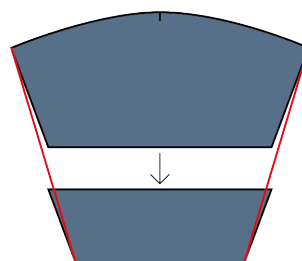
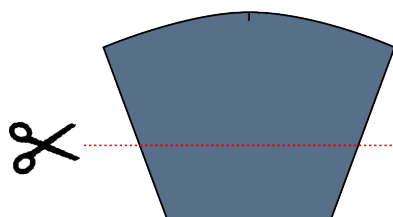


Redraft side seams

Sleeves

Cut your pattern piece as shown.

Slide both pieces away from each other to lengthen and over each other to shorten.



Redraft side seams

Skirt pieces

Shorten or lengthen your pattern pieces along the side seams.

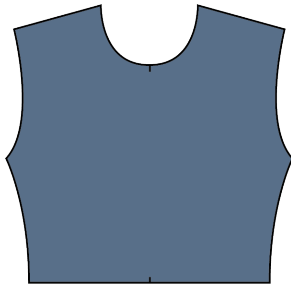


Preparing your pattern pieces

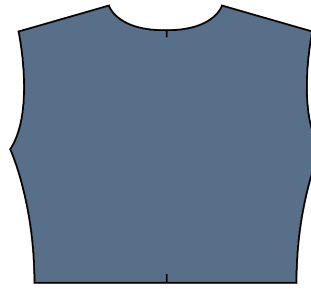
Indicate the following marks on your pattern pieces.

Do so by giving small clips within the seam allowance.

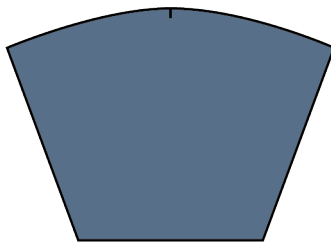
Front sweater/dress



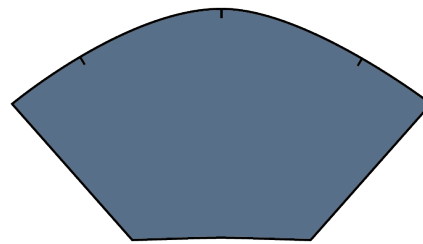
Back sweater/dress



Regular sleeve



Gathered sleeve



Skirt pieces



Neckband



Waistband

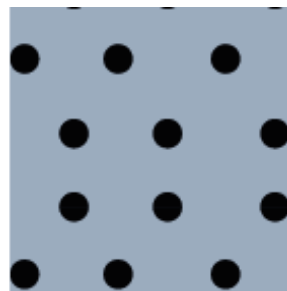


Instructions

Right side of fabric



Wrong side of fabric



Steps A to D2 are identical for sweater version and dress version.

A. Shoulder seams

Pin and stitch shoulder seams of front and back pieces right sides together.

Press seams.

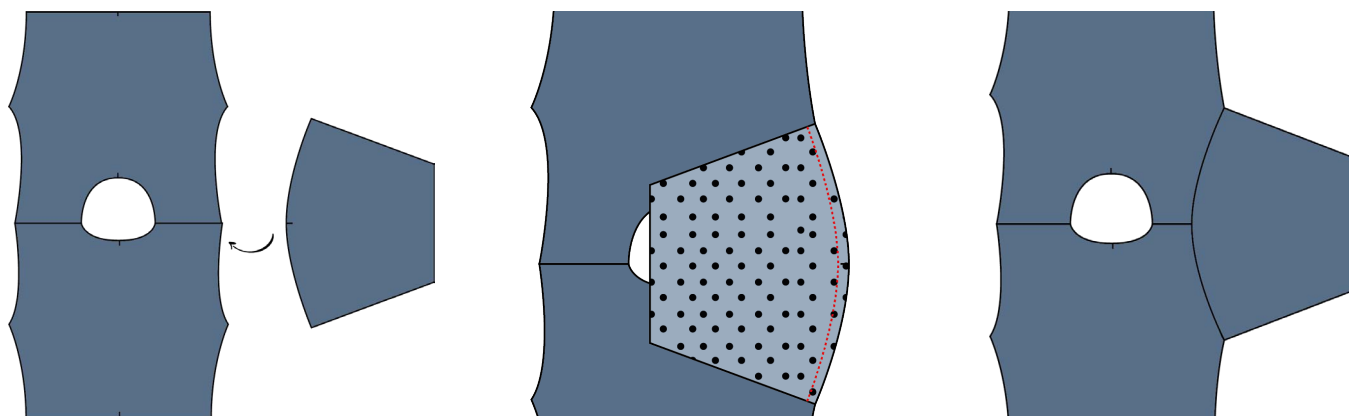


B. Sleeves

1) Regular sleeve

Pin your sleeve to front and back piece, right sides facing.
Make sure the middle of the sleeve aligns with the shoulder seam.

Stitch sleeve into place and press seam.

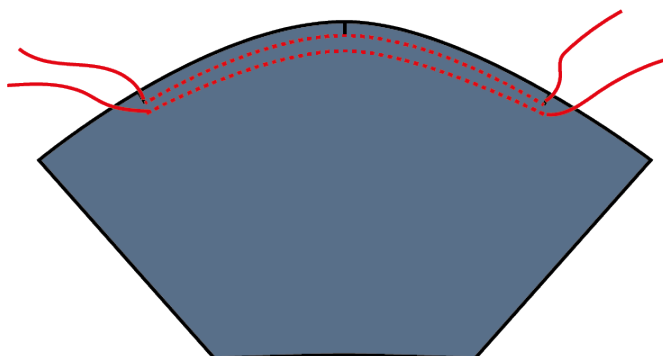


Repeat for the other sleeve.

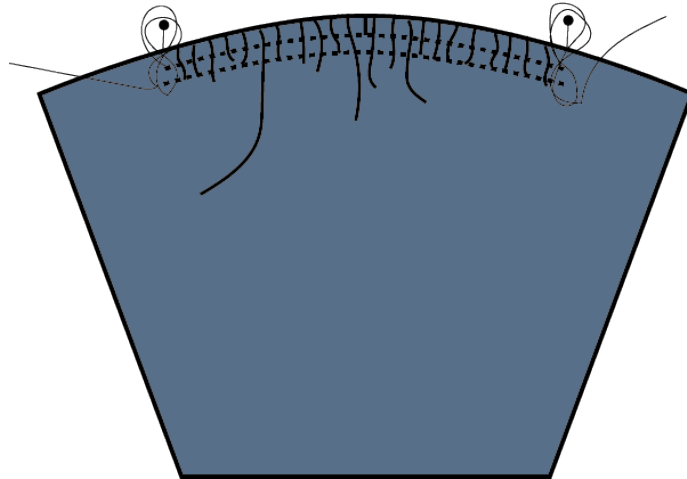
Go to step C on page 10.

2) Gathered sleeve

Stitch 2 gathering threads between the marks on your sleeve head.
Stitch the first thread at presser foot width from the edge, the second at presser foot width from the first.



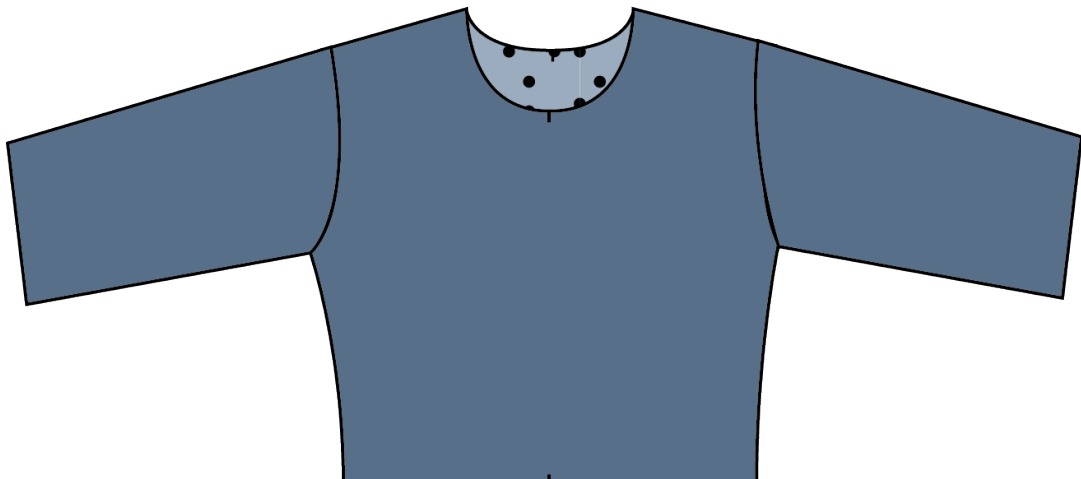
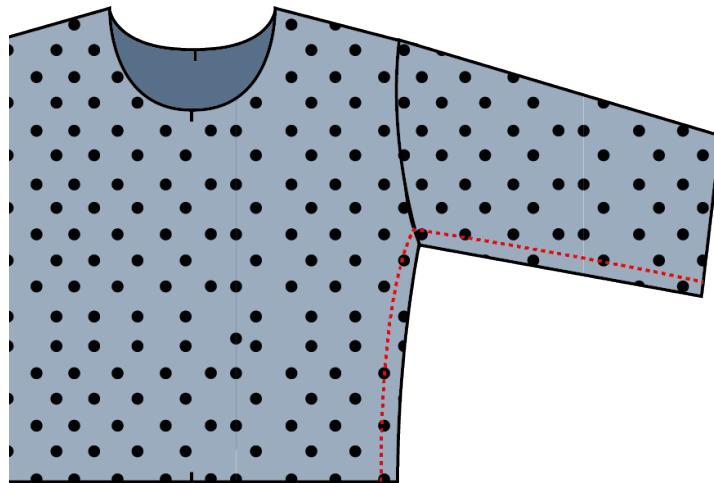
Gather your sleeve until it fits the armhole of front and back bodice.
Gently pull the gathering threads and divide gathers evenly.
Secure by twisting your threads around a pin in an 8-shape.



For attaching the sleeve to your bodice you can follow the same steps as for the regular sleeve.
Don't forget to remove the gathering threads.

C. Side seams and sleeve seams.

Pin side seams and sleeve seams of front and back pieces together, right sides facing.
Stitch together in one continuous seam.
Press seams and turn your bodice right side out.



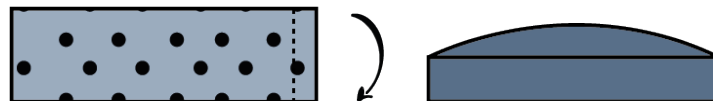
D. Neckband, cuffs and waistband

1) Neckband

Fold neckband in half, right sides facing.
Pin and stitch seam.
Press seam.

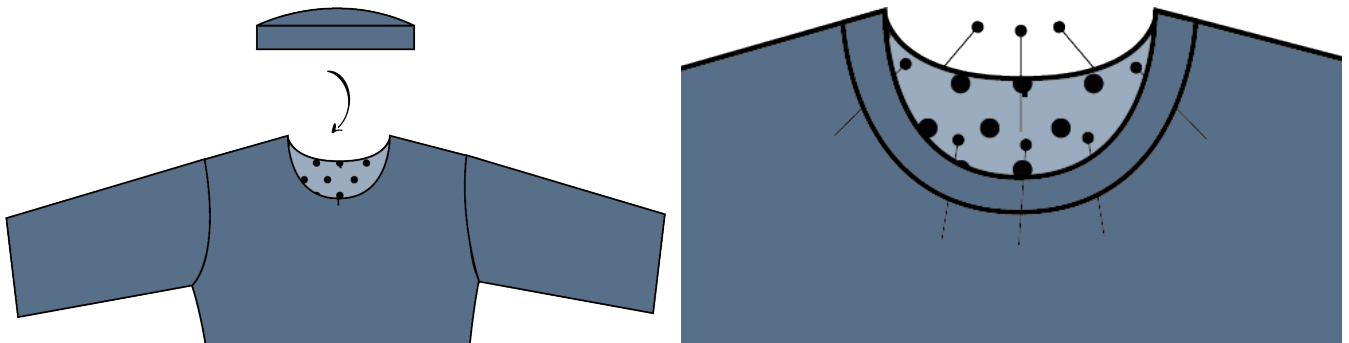


Fold and press in half again, wrong sides facing.
This way you'll get a tunnel.

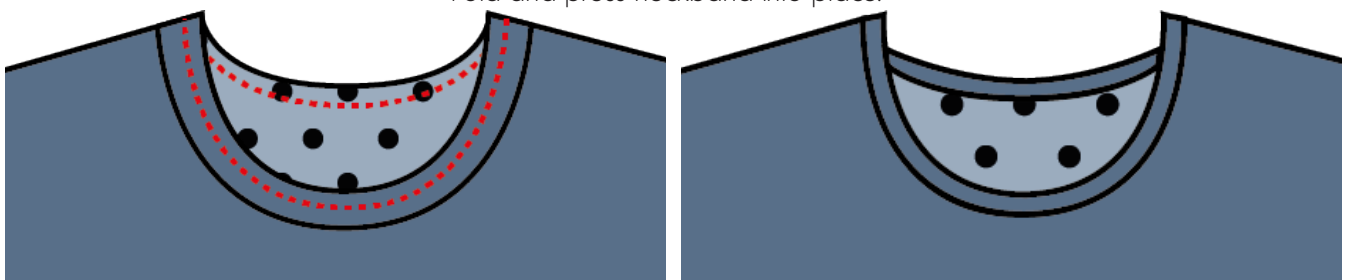


Slide neckband over neckline of bodice and pin together.
Start by pinning center front and center back of neckband to center front and center back of neckline.

The raw edges of the neckband align with the raw edge of the neckline.
Gently pull your neckband and pin in between center front and back.

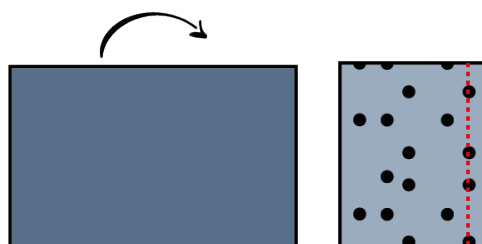


Stitch into place, all the way around.
Fold and press neckband into place.

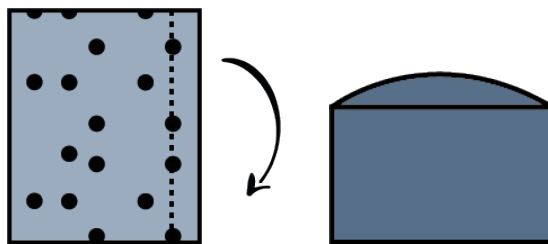


2) Sleeve cuffs

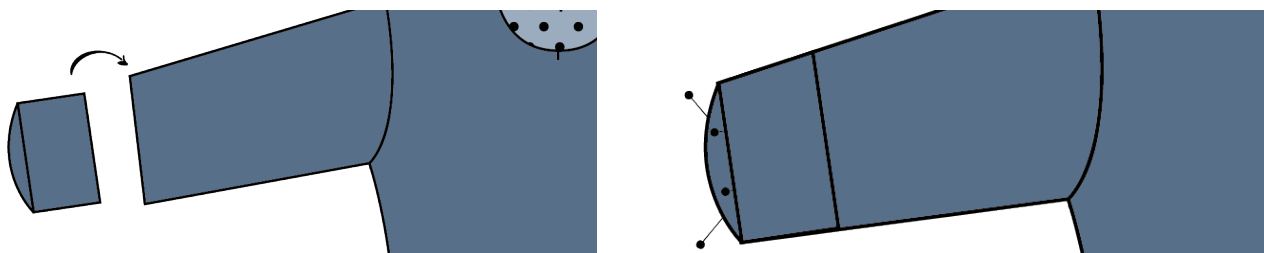
Fold cuff in half, right sides facing.
Pin and stitch seam.
Press seam.



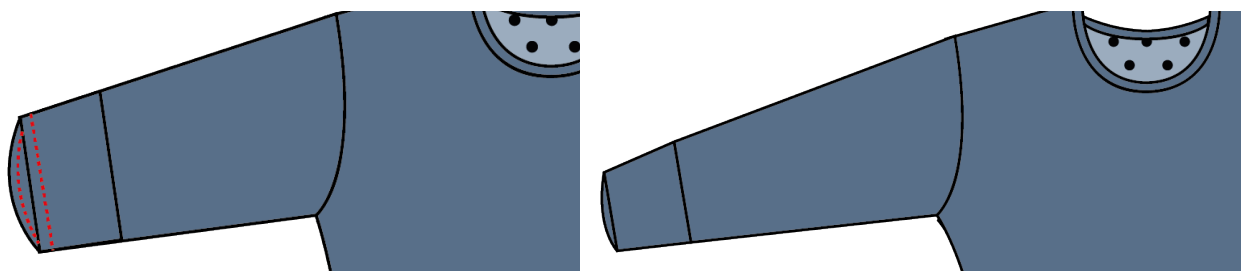
Fold and press in half again, wrong sides facing.
This way you'll get a tunnel.



Slide sleeve cuff over sleeve of your sweater/dress.
Pin seam of sleeve cuff to seam of sleeve.
The raw edge of the cuff aligns with the raw edge of the sleeve.
Gently pull cuff while pinning all the way around.



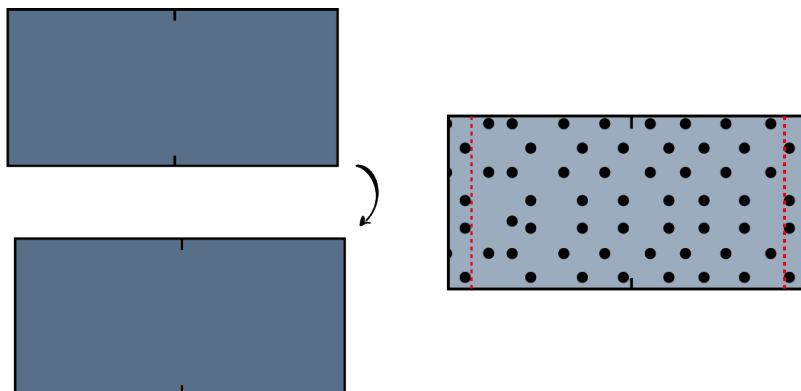
Stitch and fold into place, don't forget to press ;-)



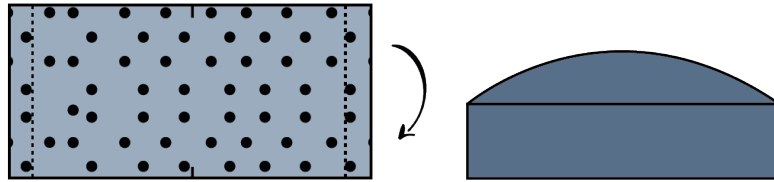
Are you making the dress?
Go to step E on page 13.
Continue with step 3 below for the sweater version.

3) Waistband

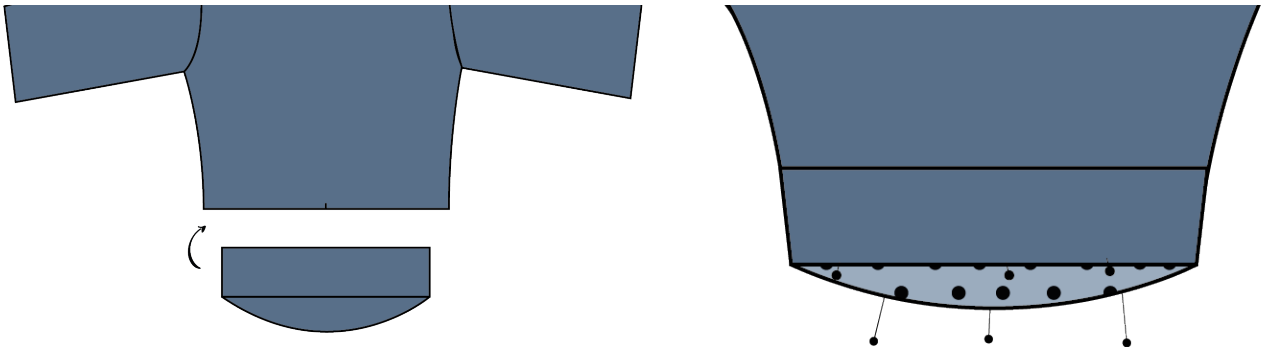
Put both waistband pieces on top of each other, right sides facing.
Pin and stitch side seams.
Press seams.



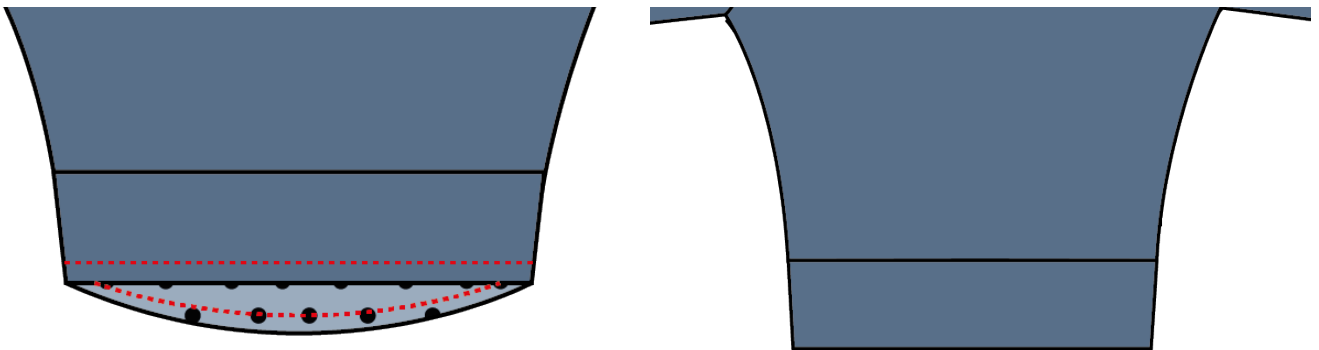
Fold and press in half, wrong sides facing.
This way you'll get a tunnel.



Slide waistband over the bottom of your sweater.
Pin side seams, center front and center back of waistband to side seams, center front and center back of sweater.
The raw edge of the waistband aligns with the raw edge of the sweater.
Gently pull your waistband while pinning into place.



Stitch all the way around and fold into place.
Press.



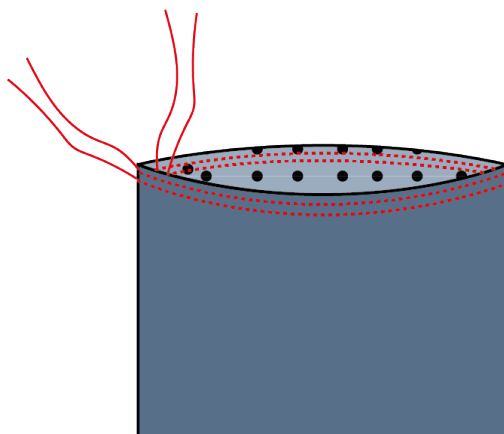
Press your sweater again and you're finished!

E. Skirt pieces dress

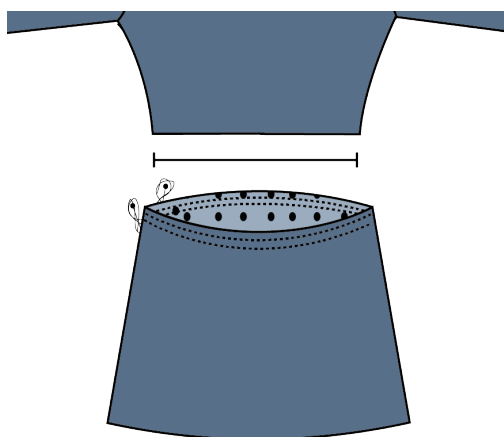
Put both skirt pieces on top of each other, right sides facing.
Pin and stitch side seams.
Press seams.



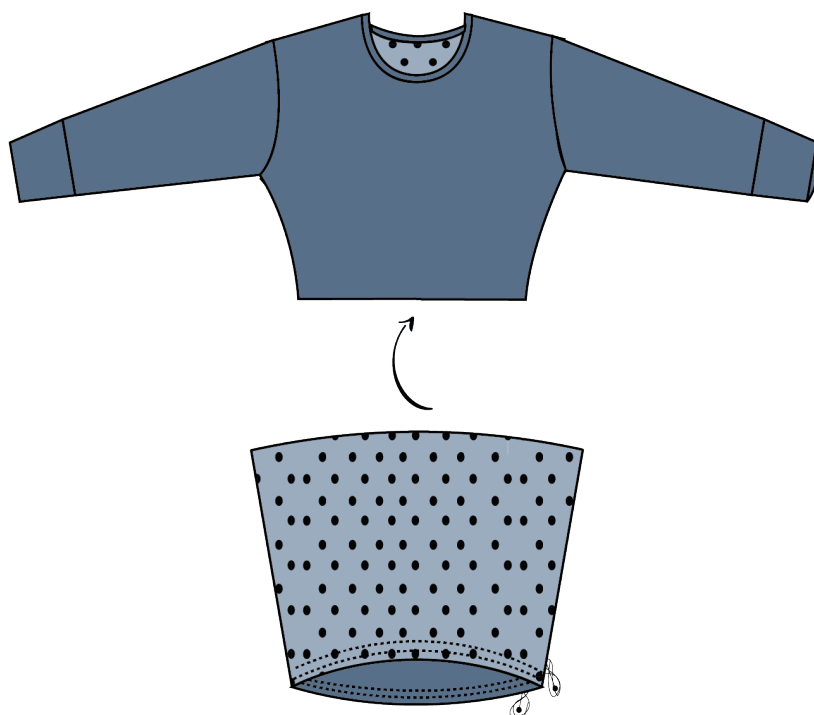
Stitch 2 gathering threads at the top of your skirt pieces, all the way around.
Stitch the first thread at presser foot width from the edge, the second at presser foot width from the first.



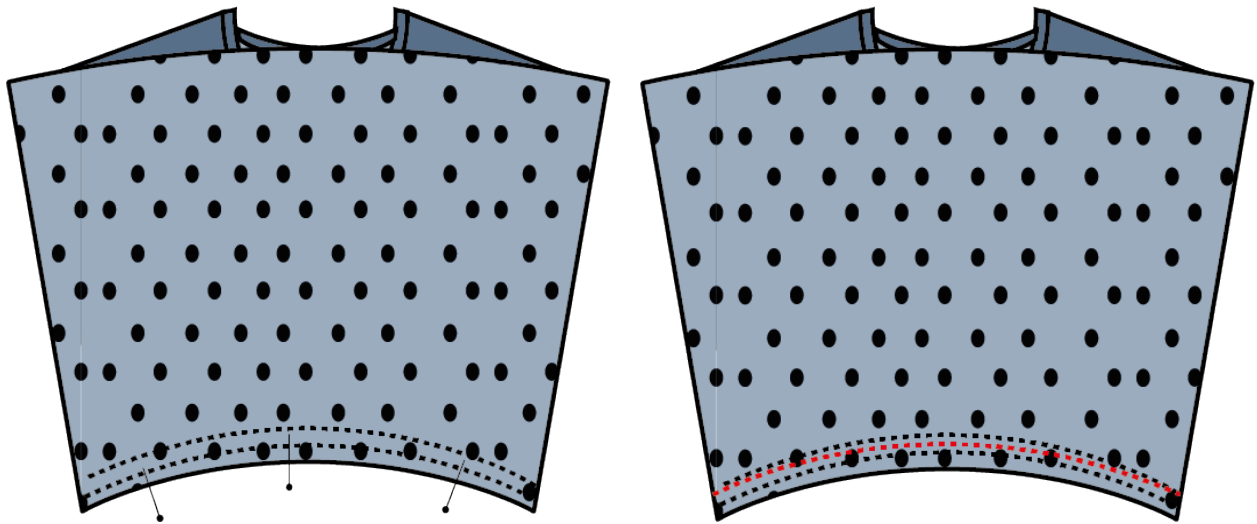
Gather your skirt pieces until they fit the bodice.
Gently pull the gathering threads and divide gathers evenly.
Secure by twisting your threads around a pin in an 8-shape.



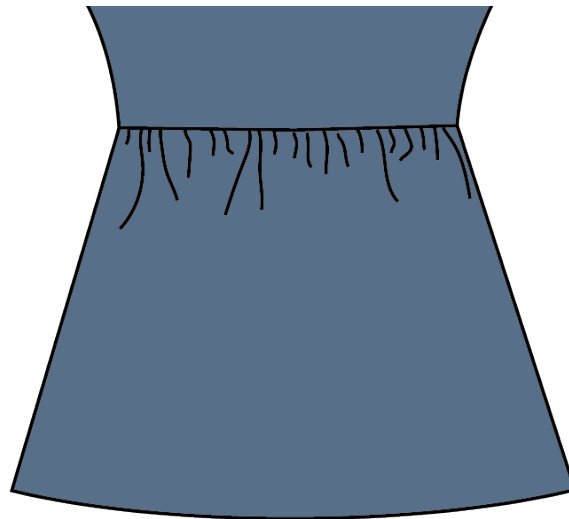
Turn your skirt inside out and slide over the bodice, right sides facing.



Pin and stitch into place, making sure the side seams and centers are aligned.



Remove the gathering threads.
Fold skirt into place and press seam.



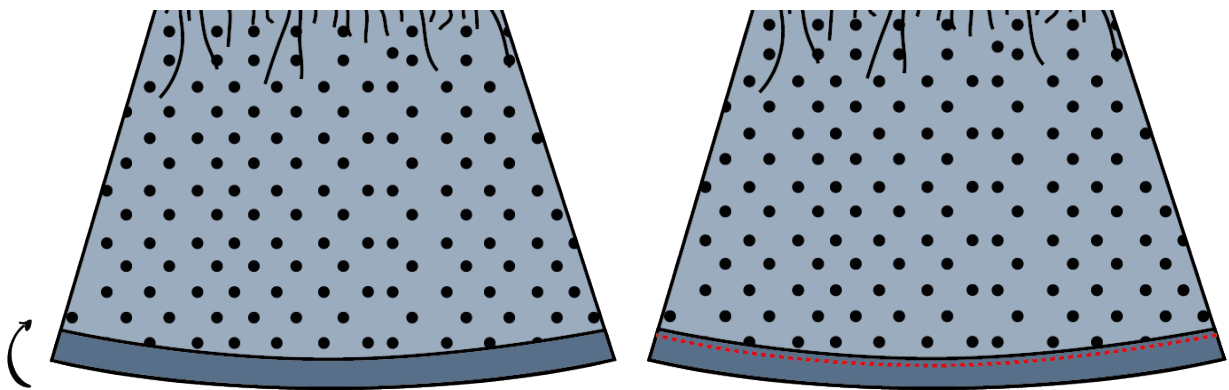
F. Hemming

Optionally you can finish the hemline of the skirt with your overlocker.

Press seam allowance 2cm inwards.

Stitch into place at a few mm from the edge.

Press.



Press your dress again and you're finished!
Great job!

Feel like sharing your creation on social media?
Use hashtags #vespersweater #vesperdress& #vesperpattern for everyone to find your
handmade masterpiece!



www.beletoile.com
www.instagram.com/_beletoile_
www.facebook.com/beletoileblog